

EXISTING SITE CALCULATIONS:

EXISTING OPEN SPACE RATIO: 50356 SF TOTAL SITE
 - 1785 SF BLDG. - 5.0%
 - 4504 SF PARKING - 8.5%
 - 7656 SF P.C. - 14.6%
 - 25563 SF CAN SPACE
 50356 SF TOTAL SITE
 1785 SF / 50356 SF = 0.035
 0.035 PROPOSED < 0.40 MAXIMUM

PROPOSED SITE CALCULATIONS:

PROPOSED OPEN SPACE RATIO: 30911 SF TOTAL SITE
 - 1785 SF BLDG. - 5.8%
 - 4504 SF PARKING - 14.6%
 - 7656 SF P.C. - 24.8%
 - 17066 SF CAN SPACE
 30911 SF TOTAL SITE
 1785 SF / 30911 SF = 0.058
 0.058 PROPOSED < 0.40 MAXIMUM

PARKING PROVIDED: 80 STANDARD SPACES
 2 HANDICAPPED SPACES
 1 LOADING ZONE

FINAL FIRE INSPECTION REQUIRED FOR APPROVAL

FIRE MARSHAL APPROVAL
 SUBJECT TO Florida Building & Fire Prevention Code, NFPA & Life Safety Code, Florida & Monroe County & State Ordinance

Emergency Light & Exit Signs
 Fire Alarm & Exit Signs
 NO STORAGE IN ATTIC

RECEIVED
 2019-203

ANY REPRODUCTION OR USE OF THESE PLANS WITHOUT WRITTEN CONSENT OF GLENN GRAY & ASSOC., INC. IS PROHIBITED

REVISIONS	DATE

FLORIDA TECHNICAL REGULATION
 11B-1.01 REGISTERED PROFESSIONAL ENGINEER
 11B-1.02 REGISTERED PROFESSIONAL ARCHITECT
 11B-1.03 REGISTERED PROFESSIONAL LANDSCAPE ARCHITECT
 11B-1.04 REGISTERED PROFESSIONAL SURVEYOR
 11B-1.05 REGISTERED PROFESSIONAL CIVIL ENGINEER
 11B-1.06 REGISTERED PROFESSIONAL ELECTRICAL ENGINEER
 11B-1.07 REGISTERED PROFESSIONAL MECHANICAL ENGINEER
 11B-1.08 REGISTERED PROFESSIONAL CHEMICAL ENGINEER
 11B-1.09 REGISTERED PROFESSIONAL INDUSTRIAL ENGINEER
 11B-1.10 REGISTERED PROFESSIONAL AERONAUTICAL ENGINEER
 11B-1.11 REGISTERED PROFESSIONAL METALLURGICAL ENGINEER
 11B-1.12 REGISTERED PROFESSIONAL NUCLEAR ENGINEER
 11B-1.13 REGISTERED PROFESSIONAL AGRICULTURAL ENGINEER
 11B-1.14 REGISTERED PROFESSIONAL MARINE ENGINEER
 11B-1.15 REGISTERED PROFESSIONAL ENVIRONMENTAL ENGINEER
 11B-1.16 REGISTERED PROFESSIONAL SAFETY ENGINEER
 11B-1.17 REGISTERED PROFESSIONAL TRANSPORTATION ENGINEER
 11B-1.18 REGISTERED PROFESSIONAL POLYMER ENGINEER
 11B-1.19 REGISTERED PROFESSIONAL FOOD ENGINEER
 11B-1.20 REGISTERED PROFESSIONAL FIBER ENGINEER
 11B-1.21 REGISTERED PROFESSIONAL PETROLEUM ENGINEER
 11B-1.22 REGISTERED PROFESSIONAL BIOMEDICAL ENGINEER
 11B-1.23 REGISTERED PROFESSIONAL AEROSPACE ENGINEER
 11B-1.24 REGISTERED PROFESSIONAL CHEMICAL ENGINEER
 11B-1.25 REGISTERED PROFESSIONAL METALLURGICAL ENGINEER
 11B-1.26 REGISTERED PROFESSIONAL NUCLEAR ENGINEER
 11B-1.27 REGISTERED PROFESSIONAL AGRICULTURAL ENGINEER
 11B-1.28 REGISTERED PROFESSIONAL MARINE ENGINEER
 11B-1.29 REGISTERED PROFESSIONAL ENVIRONMENTAL ENGINEER
 11B-1.30 REGISTERED PROFESSIONAL SAFETY ENGINEER
 11B-1.31 REGISTERED PROFESSIONAL TRANSPORTATION ENGINEER
 11B-1.32 REGISTERED PROFESSIONAL POLYMER ENGINEER
 11B-1.33 REGISTERED PROFESSIONAL FOOD ENGINEER
 11B-1.34 REGISTERED PROFESSIONAL FIBER ENGINEER
 11B-1.35 REGISTERED PROFESSIONAL PETROLEUM ENGINEER
 11B-1.36 REGISTERED PROFESSIONAL BIOMEDICAL ENGINEER
 11B-1.37 REGISTERED PROFESSIONAL AEROSPACE ENGINEER

AN ADDITION
STRIKE ZONE CHARTERS
 LOT 1, BLOCK 1
 FIRE CHANNEL, STRIKE SECTION 1
 BIG PINE KEY
 MONROE COUNTY, FL.

GLENN GRAY
 & Associates
 RESIDENTIAL DEVELOPMENT BY DESIGN



DATE	BY
07/18/04	D.W.Z.
11/20/04	

U.S. HIGHWAY NO.

11-30-04
 R.W.

1-CANOPY (7)
 (Gumbo Limbo)
 3-UNDERSTORY
 (BOTTLED WOOD) (5)

REVISIONS
 1-15/04
 2-15/04
 3-15/04
 4-15/04
 5-15/04
 6-15/04
 7-15/04
 8-15/04
 9-15/04
 10-15/04
 11-15/04
 12-15/04
 13-15/04
 14-15/04
 15-15/04
 16-15/04
 17-15/04
 18-15/04
 19-15/04
 20-15/04
 21-15/04
 22-15/04
 23-15/04
 24-15/04
 25-15/04
 26-15/04
 27-15/04
 28-15/04
 29-15/04
 30-15/04
 31-15/04
 32-15/04
 33-15/04
 34-15/04
 35-15/04
 36-15/04
 37-15/04
 38-15/04
 39-15/04
 40-15/04
 41-15/04
 42-15/04
 43-15/04
 44-15/04
 45-15/04
 46-15/04
 47-15/04
 48-15/04
 49-15/04
 50-15/04
 51-15/04
 52-15/04
 53-15/04
 54-15/04
 55-15/04
 56-15/04
 57-15/04
 58-15/04
 59-15/04
 60-15/04
 61-15/04
 62-15/04
 63-15/04
 64-15/04
 65-15/04
 66-15/04
 67-15/04
 68-15/04
 69-15/04
 70-15/04
 71-15/04
 72-15/04
 73-15/04
 74-15/04
 75-15/04
 76-15/04
 77-15/04
 78-15/04
 79-15/04
 80-15/04
 81-15/04
 82-15/04
 83-15/04
 84-15/04
 85-15/04
 86-15/04
 87-15/04
 88-15/04
 89-15/04
 90-15/04
 91-15/04
 92-15/04
 93-15/04
 94-15/04
 95-15/04
 96-15/04
 97-15/04
 98-15/04
 99-15/04
 100-15/04

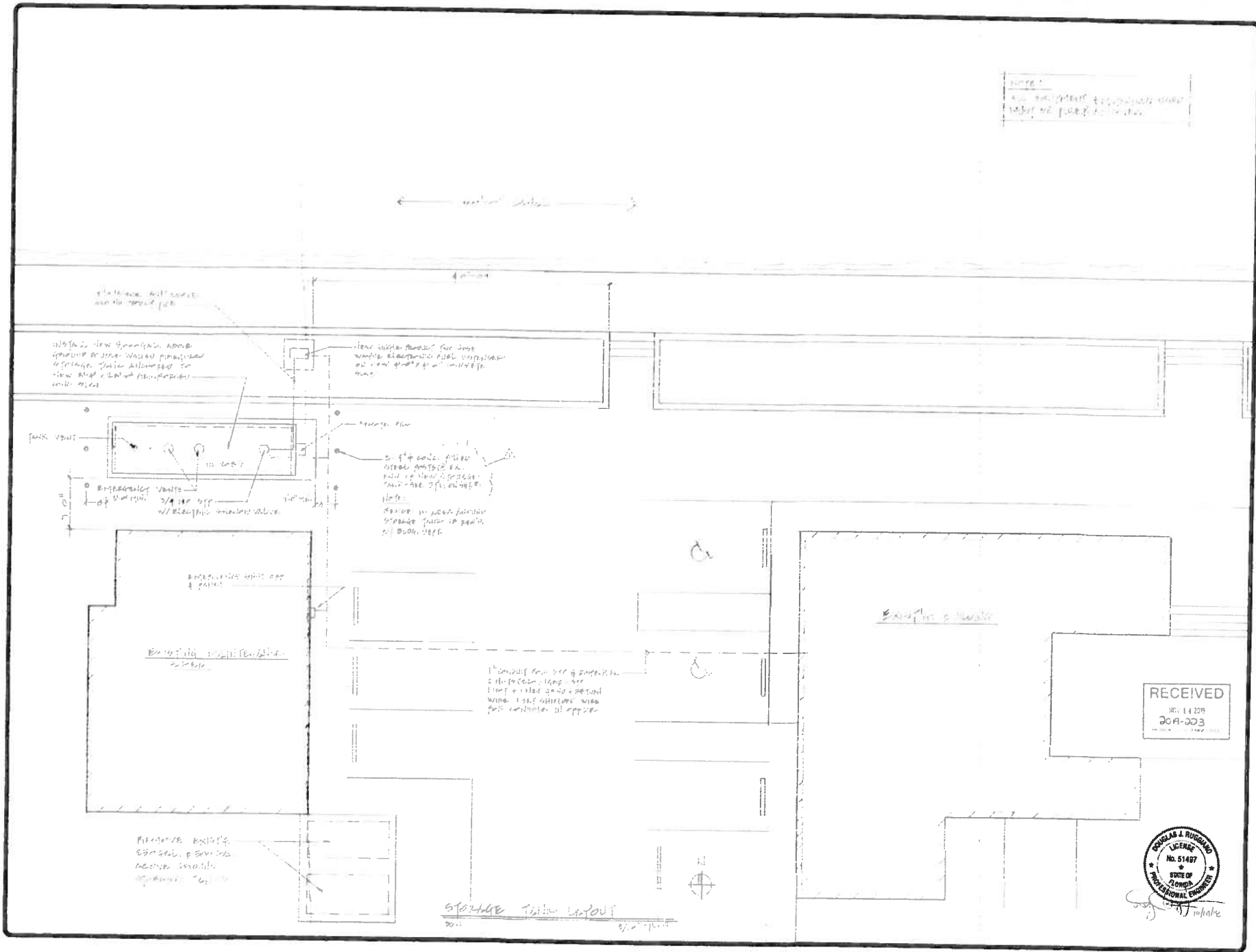
041-5187

SC 357
 CK 11/15/04
 11/15/04

RECORD APPROVAL
 SUBJECT TO FLORIDA BUILDING CODE
 11/15/04

Site

THE WORK SHOWN ON THESE PLANS CONFORMS WITH THE REQUIREMENTS OF ASCE 7-05



NOTE:
 All dimensions are in feet unless otherwise noted.
 All dimensions are in feet unless otherwise noted.

REVISIONS	BY
1	DK

REVISIONS:
 1. 04/25/10: 100 AMP PANEL FOR TANK WASTE ELECTRICAL CONTROL ON WEST END OF TANK.
 2. 04/25/10: 100 AMP PANEL FOR TANK WASTE ELECTRICAL CONTROL ON EAST END OF TANK.
 3. 04/25/10: 100 AMP PANEL FOR TANK WASTE ELECTRICAL CONTROL ON WEST END OF TANK.
 4. 04/25/10: 100 AMP PANEL FOR TANK WASTE ELECTRICAL CONTROL ON EAST END OF TANK.

STAKE BONE CHARLES
 LOT 2, BLOCK 1 - THE CHANNEL ESTATE SECTION
 DK (11/10/10)

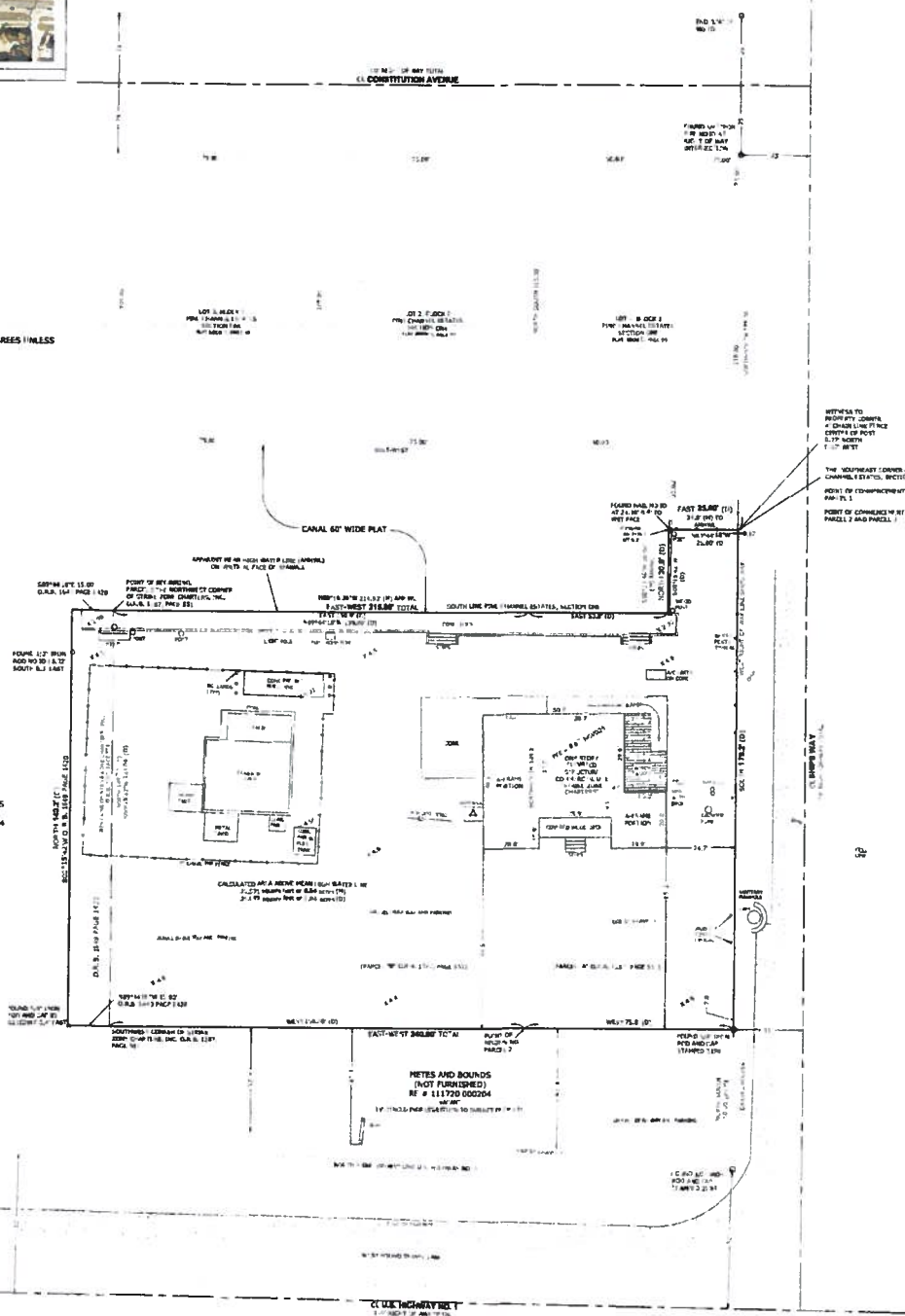
DRAWN	DATE
DK	04-25-10

MAP OF BOUNDARY SURVEY
3 PARCELS OF LAND IN A PART OF GOVERNMENT LOT 1
SECTION 27, TOWNSHIP 66 SOUTH, RANGE 29 EAST
MONROE COUNTY, FLORIDA



NORTH
 BASED FROM PLAT
 OF LOCAL INSTRUMENT
 SCALE 1" = 20'

BEARING BASE:
 NORTH-SOUTH ALONG THE WEST
 RIGHT-OF-WAY LINE OF SHIPS WAY
 ALL ANGLES DEPICTED ARE 90 DEGREES UNLESS
 OTHERWISE INDICATED
 ADDRESS
 29575 SHIPS WAY
 BIG PINE KEY, FLORIDA 33004



WITNESS TO
 PROPERTY, COUNTY
 & DIVISION OFFICE
 COUNTY OF POST
 27th SECTION
 1st 27th WEST
 THE SOUTHWEST CORNER OF LOT 1, BLOCK 1 FROM
 CHANNEL ESTATES, SECTION ONE
 POINT OF COMMENCEMENT TO BE AS FOLLOWS:
 PAR 1-1
 POINT OF COMMENCEMENT AT
 PARCELS 2 AND PARCELS 3

LEGAL DESCRIPTION
 A Parcel of land in a part of Government Lot 1, Section 27, Township 66 South, Range 29 East in Big Pine Key, Monroe County, Florida, and being more particularly described by metes and bounds as follows:
Parcel 1
 COMMENCE at the Southeast corner of Lot 1, Block 1, PINE CHANNEL ESTATES, SECTION ONE, according to the Plat thereof recorded in Plat Book 5, Page 99 of the Public Records of Monroe County, Florida, or the POINT OF BEGINNING of the hereinafter described parcel of land; from said point of beginning run South along the West Right-of-Way line of Ships Way for a distance of 279.2 feet; thence West 75.0 feet; thence North, 49.2 feet to a point on the South Line of aforementioned Parcel C of Channel Estates, Section One, thence East, 50.0 feet; thence North, 35.0 feet; thence East 25.5 feet back to the Point of Beginning.
Parcel 2
 A Parcel of land in a part of Government Lot 1, Section 27, Township 66 South, Range 29 East, in Big Pine Key, Monroe County, Florida, and being more particularly described by metes and bounds as follows: (COMMENCE at the South-west corner of Lot 1, Block 1, PINE CHANNEL ESTATES, SECTION ONE, according to the Plat thereof recorded in Plat Book 5, Page 97, of the Public Records of Monroe County, Florida, and run thence South along the West Right-of-Way line of Ships Way for a distance of 139.2 feet; thence West, 75.0 feet to the POINT OF BEGINNING of the hereinafter described parcel of land; thence continue West 150.00 feet; thence North, 145.2 feet to a man-made canal; thence West along said canal 150.0 feet; thence South back a foot back to the POINT OF BEGINNING.
Parcel 3
 COMMENCE at the Southeast corner of LOT 1, BLOCK 1, PINE CHANNEL ESTATES, SECTION ONE ACCORDING TO PLAT THEREOF RECORDED IN PLAT BOOK 5, PAGE 94 OF THE PUBLIC RECORDS OF MONROE COUNTY, FLORIDA, (THENCE N89°44'18"W ALONG THE SOUTH LINE OF SAID LOT 1 A DISTANCE OF 21.00 FT. TO THE INTERSECTION WITH A CANAL 60 FT. OF-WAY; thence S89°44'18"W ALONG SAID CANAL 60 FT. OF-WAY LINE) to the FOLLOWING INFO COURSE: 509° - 42' 30" W, A DISTANCE OF 30.00 FEET; THENCE N89°44'18"W, A DISTANCE OF 139.20 FT. TO THE NORTH-WEST CORNER OF THAT CERTAIN PARCEL OF LAND DESCRIBED IN A DEED TO STRIKE ZONE CHARTERS, INC., RECORDED IN OFFICIAL RECORDS BOOK 1287, PAGE 851, SAID PUBLIC RECORDS AND THE POINT OF BEGINNING; THENCE S67°47'W ALONG THE WEST LINE OF SAID STRIKE ZONE CHARTERS, INC., A DISTANCE OF 149.04 FT., TO THE SOUTHWEST CORNER THEREOF; THENCE FORT RUN LINES THE FOLLOWING INFO COURSE: N89°44'18"W, A DISTANCE OF 11.00 FT. THENCE N60°15'42"E A DISTANCE OF 149.04 FT., TO THE INTERSECTION WITH THE ABOVE DESCRIBED CANAL, RIGHT-OF-WAY LINE; THENCE S89°44'18"W ALONG SAID CANAL RIGHT-OF-WAY LINE, A DISTANCE OF 15.00 FT., TO THE POINT OF BEGINNING.

NETS AND BOUNDS (NOT FURNISHED)
 REF # 111720 000204
 15' 11" 30.00' PAR 1 (SECTION 1) SUBSIDIARY TO PAR 1

RECEIVED
 2019
 2019-02-23

RECEIVED
 2019
 2019-02-23

REECE & ASSOCIATES
 PLS. SEE ME AT 11:30 AM 1/17/19
 7718 JUSTINA ROAD, SUITE 102, TALLAHASSEE, FLORIDA 32310
 OFFICE (904) 875-3636
 FAX (904) 875-3637

NO.	DATE	DESCRIPTION
1	1/17/19	RECEIVED
2	1/17/19	RECEIVED
3	1/17/19	RECEIVED
4	1/17/19	RECEIVED
5	1/17/19	RECEIVED
6	1/17/19	RECEIVED
7	1/17/19	RECEIVED
8	1/17/19	RECEIVED
9	1/17/19	RECEIVED
10	1/17/19	RECEIVED
11	1/17/19	RECEIVED
12	1/17/19	RECEIVED
13	1/17/19	RECEIVED
14	1/17/19	RECEIVED
15	1/17/19	RECEIVED
16	1/17/19	RECEIVED
17	1/17/19	RECEIVED
18	1/17/19	RECEIVED
19	1/17/19	RECEIVED
20	1/17/19	RECEIVED
21	1/17/19	RECEIVED
22	1/17/19	RECEIVED
23	1/17/19	RECEIVED
24	1/17/19	RECEIVED
25	1/17/19	RECEIVED
26	1/17/19	RECEIVED
27	1/17/19	RECEIVED
28	1/17/19	RECEIVED
29	1/17/19	RECEIVED
30	1/17/19	RECEIVED
31	1/17/19	RECEIVED
32	1/17/19	RECEIVED
33	1/17/19	RECEIVED
34	1/17/19	RECEIVED
35	1/17/19	RECEIVED
36	1/17/19	RECEIVED
37	1/17/19	RECEIVED
38	1/17/19	RECEIVED
39	1/17/19	RECEIVED
40	1/17/19	RECEIVED
41	1/17/19	RECEIVED
42	1/17/19	RECEIVED
43	1/17/19	RECEIVED
44	1/17/19	RECEIVED
45	1/17/19	RECEIVED
46	1/17/19	RECEIVED
47	1/17/19	RECEIVED
48	1/17/19	RECEIVED
49	1/17/19	RECEIVED
50	1/17/19	RECEIVED
51	1/17/19	RECEIVED
52	1/17/19	RECEIVED
53	1/17/19	RECEIVED
54	1/17/19	RECEIVED
55	1/17/19	RECEIVED
56	1/17/19	RECEIVED
57	1/17/19	RECEIVED
58	1/17/19	RECEIVED
59	1/17/19	RECEIVED
60	1/17/19	RECEIVED
61	1/17/19	RECEIVED
62	1/17/19	RECEIVED
63	1/17/19	RECEIVED
64	1/17/19	RECEIVED
65	1/17/19	RECEIVED
66	1/17/19	RECEIVED
67	1/17/19	RECEIVED
68	1/17/19	RECEIVED
69	1/17/19	RECEIVED
70	1/17/19	RECEIVED
71	1/17/19	RECEIVED
72	1/17/19	RECEIVED
73	1/17/19	RECEIVED
74	1/17/19	RECEIVED
75	1/17/19	RECEIVED
76	1/17/19	RECEIVED
77	1/17/19	RECEIVED
78	1/17/19	RECEIVED
79	1/17/19	RECEIVED
80	1/17/19	RECEIVED
81	1/17/19	RECEIVED
82	1/17/19	RECEIVED
83	1/17/19	RECEIVED
84	1/17/19	RECEIVED
85	1/17/19	RECEIVED
86	1/17/19	RECEIVED
87	1/17/19	RECEIVED
88	1/17/19	RECEIVED
89	1/17/19	RECEIVED
90	1/17/19	RECEIVED
91	1/17/19	RECEIVED
92	1/17/19	RECEIVED
93	1/17/19	RECEIVED
94	1/17/19	RECEIVED
95	1/17/19	RECEIVED
96	1/17/19	RECEIVED
97	1/17/19	RECEIVED
98	1/17/19	RECEIVED
99	1/17/19	RECEIVED
100	1/17/19	RECEIVED